

REFERENCES

Application range

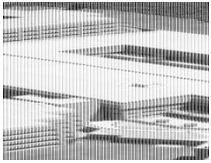
Hospitals

Type

Reference

Continent | Country

Africa | South Africa



Albert Luthuli Hospital - Durban

The Inkosi Albert Luthuli hospital, located at the outskirts of the city of Durban, South Africa, is the largest and most modern hospital in southern Africa.

[Detail view](#)

Application range

Arenas

Type

Football Special 2014

Continent | Country

South America | Brazil



Arena Amazônia – Manaus

The Arena Amazônia is the stadium of Manaus, in northern Brazil, where the Rio Negro meets the Amazon. The stadium was built with sustainability in mind. For example, rain water is used to flush the toilets and to water the green, while the sun is used as an energy source. In addition, a special coating of the roof keeps the interior cool and saves energy.

[Detail view](#)

Application range

Arenas

Type

Football Special 2014

Continent | Country

South America | Brazil



Arena Fonte Nova – Salvador

Until 2007, Salvador was the home of the Estádio Fonte Nova that had been erected in 1951 but was demolished and has been re-erected in recent years. The Arena Fonte Nova of today is a modern stadium with a roof made of light metal; it can accommodate 56,000 people.

[Detail view](#)

Application range

Arenas

Type

Football Special 2014

Continent | Country

South America | Brazil



Arena Pantanal – Cuiabá

Visitors to the geographical centre of South America will not only find cattle farms and light industry but also the Arena Pantanal. It was built in 2010, in Cuiabá, a city with a population of only 554,000 and hence the smallest playing venue. The stadium can accommodate almost 43,000 people but the modular structure allows for the upper parts to be dismantled such that the capacity will eventually be smaller.

[Detail view](#)

Application range

Arenas

Type

Football Special 2014

Continent | Country

South America | Brazil



Arena Pernambuco - Recife

[Detail view](#)

Application range

Arenas

Type

Football Special 2014

Continent | Country

South America | Brazil



Arena da Baixada – Curitiba

Curitiba is one of the cleanest and safest cities in Brazil and has an excellent metro bus system. This system will be much appreciated by the spectators who want to attend the football matches in the Arena de Baixada. The Arena de Baixada, formerly known as Estádio Joaquim Américo Guimarães, was originally built in 1914 and modernised in 2013 for the upcoming football event.

[Detail view](#)

Application range

Arenas

Type

Football Special 2014

Continent | Country

South America | Brazil



Arena das Dunas - Natal

To make room for the Arena das Dunas, the previous stadium of Natal was demolished in 2010. Natal is the easternmost point of Brazil and is also called 'sun city'.

[Detail view](#)

Application range

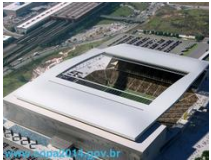
Arenas

Type

Football Special 2014

Continent | Country

South America | Brazil



Arena de São Paulo – São Paulo

The Arena de São Paulo will host the opening game in which Brazil plays Croatia. The Arena is home of the Corinthians Paulista sports club which is why it is also called Arena Corinthians.

[Detail view](#)

Application range

Arenas

Type

Reference

Continent | Country

Europe | Ukraine



Arena-Lviv - Lviv (Ukraine)

The venue in Lviv was the last of the Ukrainian EURO 2012 stadiums to be inaugurated. The first football match was played on 15 November 2011 between the Ukraine and Austria.

[Detail view](#)

Application range

Hotels

Type

Showcase

Continent | Country

Europe | Austria



Berggasthof Platzlalm

The mountain inn Berggasthof Platzlalm is situated in the popular ski resort Hochfügen in Hochzillertal in Austria, at an altitude of just under 1,800 metres.

[Detail view](#)

Application range

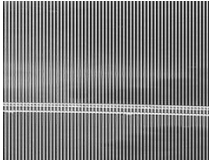
Hotels

Type

Reference

Continent | Country

Asia | United Arab Emirates



Burj al Arab - Dubai (United Arab Emirates)

The tallest and perhaps most luxurious hotel in the world is located in an unparalleled setting on an artificial island only about 280 meters from the mainland.

[Detail view](#)

Application range

Airports

Type

Showcase

Continent | Country

Europe | United Kingdom



CIP Lounges - T5 - London Heathrow Airport

Within the new Terminal 5 building (T5) there are luxurious galleries where British Airways has designated CIP lounges...

[Detail view](#)

Application range

Offices

Type

Showcase

Continent | Country

Europe | United Kingdom



Cardinal Place - London (United Kingdom)

TROX UK has successfully overcome a series of challenges to design and manufacture the best value and highest quality integrated air conditioning and lighting scheme for Land Securities office complex at Cardinal Place, London.

[Detail view](#)

Application range

Arenas

Type

Reference

Continent | Country

□

Centre National Sportif et Culturel (Luxembourg)

The Centre National Sportif et Culturel in Luxembourg was built on the Kirchberg Plateau on an area of over 13,000 hectares of land.

[Detail view](#)

Application range

Offices

Type

Reference

Continent | Country

Europe | Spain

□

Distrito de la Comunicación de Telefónica - Las Tablas (Espagne)

In the area of Las Tablas, to the north of Madrid, the Telefónica Group is building an important complex of offices and services in which they will regroup more than 14,000 employees.

[Detail view](#)

Application range

Arenas

Type

Reference

Continent | Country

Europe | Ukraine



Donbass Arena - Donetsk (Ukraine)

The Donbass Arena in Donetsk was equipped with leading-edge network infrastructure and ornate glass facade. A unique feature of the stadium is the world's largest "floating" granite football made of several black and light-coloured rocks.

[Detail view](#)

Application range

Arenas

Type

Football Special 2014

Continent | Country

South America | Brazil



Estádio Beira-Rio - Porto Alegre

The Estádio Beira-Rio, or Estádio José Pinheiro Borda, as it is officially called, was built in 1969 and refurbished and extended in 2014. Seats, ramps and accesses are now protected by an innovative roof construction. The renovation work was carried out in several steps such that the stadium could be used even during that phase.

[Detail view](#)

Application range

Arenas

Type

Football Special 2014

Continent | Country

South America | Brazil



Estádio Castelão – Fortaleza

The Estádio Castelão can be found in the popular tourist destination Fortaleza. The stadium dates actually back to 1973, i.e. it was not built specifically for the 2014 event.

[Detail view](#)

Application range

Arenas

Type

Football Special 2014

Continent | Country

South America | Brazil



Estádio Mineirão - Belo Horizonte

Belo Horizonte, which means 'beautiful horizon', is the home of the Estádio Mineirão. Its metal working and textile industries make Belo Horizonte an important economic centre but the city is also well known for its culture.

[Detail view](#)

Application range

Arenas

Type

Football Special 2014

Continent | Country

South America | Brazil



Estádio Nacional – Brasília

Brasília's Estádio Nacional is the second largest stadium in Brazil. It was erected on the site of the former Mané Garrincha stadium that had been built in 1974 and almost completely demolished in 2010. Sustainability was an important factor in the rebuilding process, and the new stadium is now easily accessible with public transport. The roof is extendable and ensures that events can take place at any time and independent of the weather.

[Detail view](#)

[load more references](#)

TROX Middle East (LLC)



P.O. Box No. 31432
19 Street
Al Quoz Industrial Estate #3
Dubai
United Arab. Emirates
Tel.: +971 4 3417448
Fax: +971 4 3417449

Online-Services

TROX Academy

Your contact partner

Service-Hotlines

United Arab. Emirates

Tel.: +971 4 3417448

Fax: +971 4 3417449

[Contact](#)